

BV-BRC

Bacterial and Viral (BV) -
Bioinformatics Resource Center (BRC)

Monthly Usage Metrics Report

Performance Period: April 1, 2023 – April 30, 2023

Issued to:

National Institute of Allergy and Infectious Diseases
National Institute of Health

Contract No.: 75N93019C00076

Contract Title: Bioinformatics Resource Centers for Infectious Diseases

Submission Date:

May 10, 2023

Submitted by:
Rick Stevens (contact PI)
Associate Laboratory Director
Argonne National Laboratory
Professor, Computer Science
University of Chicago
5801 South Ellis Avenue
Chicago, IL 60637-5418
630.252.3378 (phone)
630.252.6333 (fax)

BV-BRC Usage Metrics Report

Note: As per the recent request from NIAID, we are working with the other BRC to provide jointly agreed plots showing accumulative usage data over time. We will start including them in the monthly reports, starting with the next monthly report.

This monthly usage metrics report provides a summary of the BV-BRC usage for the current reporting period in accordance with the Joint-BRC Common Usage Metrics Plan developed by the BRCs and subsequently approved by NIAID.

As per the plan, each BRC will aggregate and report usage metrics for their constituent parts, *i.e.*, PATRIC and IRD/ViPR for BV-BRC. These metrics will serve as a basis for collecting quantitative measures of usage of the BRC resources to identify trends, areas that are performing well, and areas for improvement. Usage metrics will be reported to NIAID individually by each BRC monthly, and in combination on the BRC Gateway website once this is publicly available. In addition, annual summaries will be included in the Annual Progress Reports.

It is important to note that usage metrics across the two BRCs are highly dependent on the relative sizes of the respective research communities, the associated quantities, and types of available public data, and how each of the resources delivers the data and tools to the user. Thus, cross-BRC comparisons of individual metrics are not necessarily indicative of relative usage or performance.

Common usage metrics covering both BRCs (note that this list is subject to modification, based on feasibility of collection, changes in availability technologies, BRC website development, suggestions from NIAID program and other stakeholders, *etc.*):

Website Usage Metrics

Website usage is a key measure for evaluating use of the resource by the research communities. The number of website sessions unique users in a given period provide insights into trends, such as increased traffic resulting from outreach activities and prominent research topics and endeavors. Both the BRCs will use **AWStats** to monitor and track website usage by and report the number of unique visitors, visits, page views, pages/visit and visits/visitors for a given reporting period, aggregated across all constituent BRC websites, as summarized in the table below. In addition, we will also provide links to the live website usage statistics pages generated by AWStats from respective BRC websites, which will provide more detailed usage statistics by day of the week/month, country, browser / operating system, and more.

- **Total visits**

- *Definition* - Number of visits made by all visitors. Think "session" here, say a unique IP accesses a page, and then requests three other pages within an hour. All of the "pages" are included in the visit, therefore you should expect multiple pages per visit and multiple visits per unique visitor (assuming that some of the unique IPs are logged with more than an hour between requests)
- *Measurement mechanism* - AWStats.
- *Measure* - Total number of visits per month.

- **Total unique visitors**

- *Definition* - A unique visitor is a person or computer (host) that has made at least 1 hit on 1 page of your web site during the current period shown by the report. If this user makes several visits during this period, it is counted only once. Visitors are tracked by IP address, so if multiple users are accessing your site from the same IP (such as a home or office network), they will be counted as a single unique visitor.
- *Measurement mechanism* - AWStats.

- *Measure* - Total number of unique visitors per month.
- **Total page views**
 - *Definition* - The number of "pages" viewed by visitors. Pages are usually HTML, PHP or ASP files, not images or other files requested as a result of loading a "Page" (like js,css... files).
 - *Measurement mechanism* - AWStats.
 - *Measure* - Total pageviews per month.
- **Average pages per visit**
 - *Definition* - The average number of pages viewed during a visit. Repeated views of a single page are counted.
 - *Measurement mechanism* - AWStats.
 - *Measure* - Average number of pages per visit per month.
- **Average visits per visitor**
 - *Definition* - The average number of visits per visitor.
 - *Measurement mechanism* - AWStats.
 - *Measure* - Average number of visits per visitor per month.
- **Average visit duration**
 - *Definition* - The average time a visitor spent on the site for each visit, measured in seconds.
 - *Measurement mechanism* - AWStats.
 - *Measure* - Average visit duration per month.
- **Total bandwidth**
 - *Definition* - Total number of bytes for pages, images and files downloaded by web browsing. This number includes traffic for web only (or mail only, or ftp only depending on value of LogType). This number does not include technical header data size used inside the HTTP or HTTPS protocol or by protocols at a lower level (TCP, IP...). Note that this number is often lower than the bandwidth usually reported by internet providers as it is counted at a lower level and includes all IP and UDP traffic.
 - *Measurement mechanism* - AWStats.
 - *Measure* - Total bandwidth per month.
- **Registered users that run a service**
 - *Definition* - Total number of unique registered users that run an analysis service (requiring login) during the month.
 - *Measurement mechanism* - Service logs.
 - *Measure* - Total unique registered users per month.

Table 1. BV-BRC Website Usage Metrics₁

Metric	IRD₃	ViPR₃	BV-BRC	All Combined
Total visits	1,280	1,628	183,898	186,054
Total unique visitors	475	580	24,068	24,616
Total pageviews	34,864	15,301	533,163	590,610
Avg. pages / visit	27.23	9.39	2.89	3.17
Avg. visits / visitor	2.69	2.8	7.64	7.55
Avg. visit duration (seconds)	711	639	590	593
Bandwidth (GB)	0.51	1.02	43.36	45.35

Registered users that run a service ₂	NA ₃	NA ₃	1,444	1,444
--	-----------------	-----------------	-------	-------

Notes:

1. A link to the BV-BRC summary AWStats page is available from the BV-BRC About page (<https://www.bv-brc.org/about>)
2. Note: This measure This will only be a fraction of the total usage by registered users because they may be doing other types of work on the site, either logged in or not.
3. The IRD and ViPR resources have now been decommissioned and are no longer available. They will be removed from the next month's report.

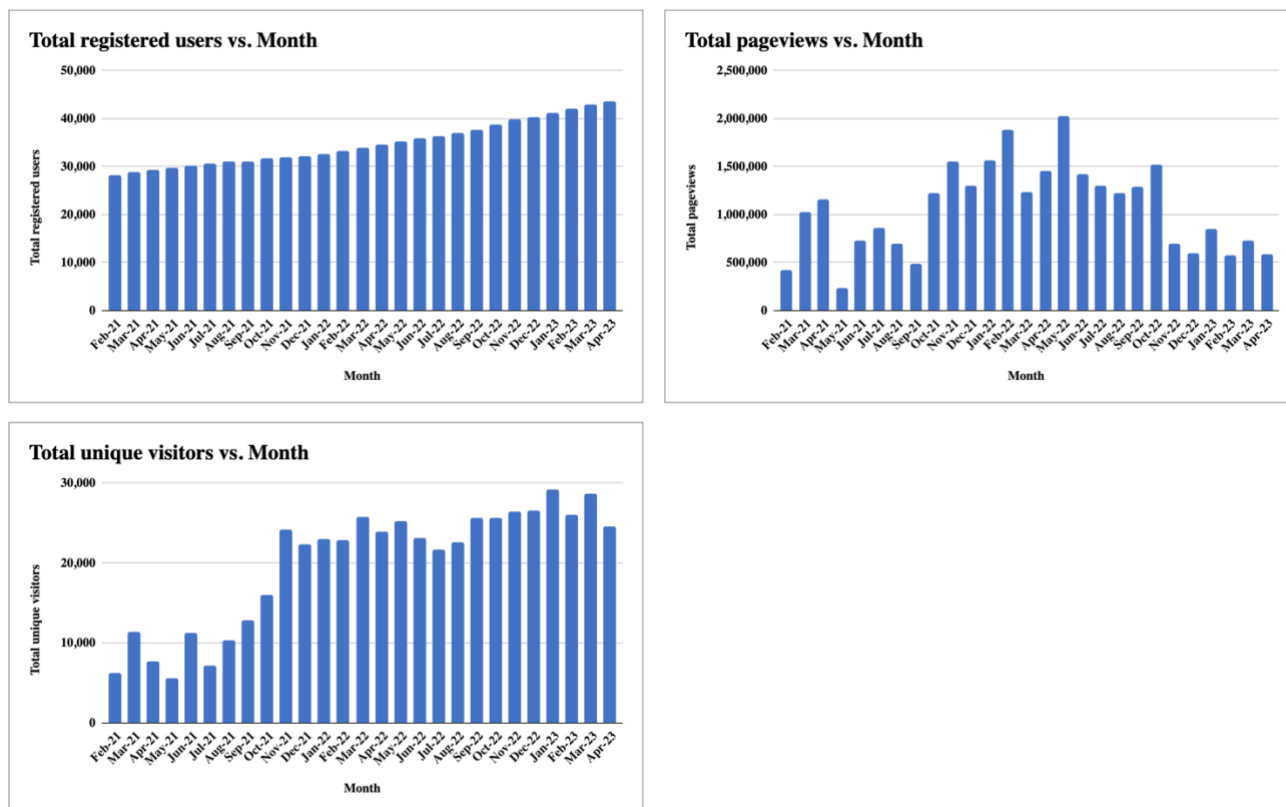


Figure 1. Selected BV-BRC website usage metrics.

Website Usage by Taxa

BRCs support a variety of organism taxa containing human pathogens and their vectors, along with related genomic and other omics data types. These taxa vary widely in the number of species and genomes they contain, availability of omics data, as well as the size of the research communities studying them. Measuring the BRC website usage by taxa allows us to understand how BRC resources are used by various organism communities. We will report the number of pageviews by taxa, which will be measured by querying the website usage statistics in Google Analytics by taxa name.

Table 2. BV-BRC Website Usage by Taxa

Taxa	Taxon ID	Domain	Species₁	Genomes₁	Page Views₁
Acinetobacter	469	Bacteria	755	15,268	757
Bacillus	1386	Bacteria	1,116	9,215	1,816
Bartonella	773	Bacteria	84	365	196
Borrelia	64895	Bacteria	21	5,822	1
Brucella	234	Bacteria	96	1,354	347
Burkholderia	32008	Bacteria	334	5,635	812
Campylobacter	194	Bacteria	341	9,444	346
Chlamydia	810	Bacteria	23	657	20
Clostridium	1485	Bacteria	494	5,466	317
Coxiella	776	Bacteria	15	212	1
Ehrlichia	943	Bacteria	7	46	0
Escherichia	561	Bacteria	195	52,183	1,679
Francisella	262	Bacteria	31	1,217	23
Helicobacter	209	Bacteria	95	3,424	442
Listeria	1637	Bacteria	34	6,374	248
Mycobacterium	1763	Bacteria	338	33,856	1,026
Pseudomonas	286	Bacteria	2,222	19,071	1,468
Rickettsia	780	Bacteria	77	429	17
Salmonella	590	Bacteria	399	33,712	796
Shigella	620	Bacteria	113	5,503	55
Staphylococcus	1279	Bacteria	578	27,624	1,435
Streptococcus	1301	Bacteria	460	40,293	186
Vibrio	662	Bacteria	487	7,856	344
Yersinia	629	Bacteria	35	1,737	96
Adenoviridae	10508	Virus	580	25,985	55
Asfarviridae	137992	Virus	4	11,379	5
Bunyaviridae	1980410	Virus	1,611	57,046	166

Caliciviridae	11974	Virus	258	67,445	36
Coronaviridae	11118	Virus	1,100	7,089,651	177
Filoviridae	11266	Virus	21	4,474	33
Flaviviridae	11050	Virus	545	391,071	155
Hepadnaviridae	10404	Virus	43	128,620	17
Hepeviridae	291484	Virus	96	41,305	57
Herpesviridae	10292	Virus	796	66,134	47
Orthomyxoviridae	11308	Virus	177	1,048,753	247
Paramyxoviridae	11158	Virus	716	67,490	66
Parvoviridae	10780	Virus	837	32,149	19
Picornaviridae	12058	Virus	1,187	165,995	42
Pneumoviridae	11244	Virus	15	57,556	39
Polyomaviridae	151341	Virus	277	13,441	10
Poxviridae		Virus	283	18,321	36
Reoviridae	2732541	Virus	458	148,875	98
Rhabdoviridae	11270	Virus	721	40,740	19
Togaviridae	11018	Virus	70	12,889	56
SARS-CoV-2 (BV-BRC)	2697049	Virus	1	7,033,900	30

Notes:

1. Since IRD and ViPR are now redirecting to BV-BRC we are no longer ingesting genomes into those databases. So, the Species and Genomes counts are from BV-BRC for the viral data.

Website Usage by Data Types

BRCs support genomic and a variety of other omics data types, providing an integrated view of these multi-omics data and related analysis tools. Tracking the website usage by primary data types allows us to understand how these data types are used. We will report the number of website pageviews by primary data types, which will be measured by querying the website usage statistics in Google Analytics by data type. ViPR/IRD pages views are combined (added together) based on data type.

Table 3. BV-BRC Website Usage by Data Type

Data Type	BRC Domain	Page Views
Taxonomy	BV-BRC	7,365

Genome	BV-BRC	48,394
Feature (genes/proteins)	BV-BRC	7,779
Specialty (gene)	BV-BRC	1,858
Families (protein)	BV-BRC	445
Pathway	BV-BRC	1,509
Subsystem	BV-BRC	548
Transcriptomics	BV-BRC	547
Interactions	BV-BRC	4
Phylogeny	BV-BRC	314
Antibiotic	BV-BRC	273
Workspace (user data)	BV-BRC	91,506
Strain	BV-BRC	1,277
Epitopes	BV-BRC	90
Ortholog	BV-BRC	0
Drug	BV-BRC	30
(Protein) structures	BV-BRC	156
Domain/Motif	BV-BRC	48
Plasmid	BV-BRC	1,081
SFVT	BV-BRC	0
Surveillance	BV-BRC	61
Serology	BV-BRC	56
Phenotypes	BV-BRC	58
PCR Primers	BV-BRC	258
Variant (SARS Variant Tracker)	BV-BRC	1,037

Notes:

1. *The IRD and ViPR resources have now been decommissioned and are no longer available. They have been removed from this table. All web traffic statistics are for the BV-BRC resource.*

Service/Tool Usage

Both BRC analysis services and tools allow users to analyze data pulled from the respective BRC databases and their own private data, compare to other datasets, and save the results in their private workspaces. Since the types of tools vary across the BRCs, we will report aggregated usage of all tools in each BRC, and also a breakdown by service/tool. We will also report the total amount of storage used for user data. VIPR/IRD tools/services are combined (added together) that are common in both systems.

- **Total number of analysis tasks submitted and completed successfully by users**

- *Definition* - The total number of analysis tasks submitted and completed successfully by users for a given month. An analysis task usually involves users providing input data/search terms and/or parameters to initiate a search or analysis task, which may perform one or more searches, data transformations, or data analysis steps, generate results that provide additional insights into the data and present it back to the user in structured view and/or file formats via web interface and/or user workspace.
 - *Measurement mechanism* - Analysis tasks are recorded via website and server logs, which are used to tally the number.
 - *Measure* - Analysis tasks submitted and completed successfully per month.
- **Analysis tasks submitted and successfully completed by service/tool**
 - *Definition* - A breakdown of total number of analysis tasks (see metric above), summarized by service/tool during the specified date range.
 - *Measurement mechanism* - Analysis tasks submitted by users and successfully completed are captured via website and server logs, which are used to tally the number.
 - *Measure* - Jobs per month, tallied by service/tool.

Table 4. BRC Tools/Services Usage Metrics

Tool/Service	BRC Domain	Jobs Submitted	Jobs Completed₁
Codon Tree	BV-BRC	634	620
Comparative Systems	BV-BRC	300	277
Comprehensive Genome Analysis	BV-BRC	2,507	2156
Differential Expression	BV-BRC	24	15
FastqUtils	BV-BRC	2,479	2,300
Gene Tree	BV-BRC	270	157
Genome Alignment	BV-BRC	196	181
Genome Annotation	BV-BRC	3,737	3,535
Genome Assembly	BV-BRC	2,038	1,913
Genome Comparison	BV-BRC	339	301
HA Subtype Numbering	BV-BRC	85	67
Homology	BV-BRC	1,747	1,685
MSA	BV-BRC	536	373
MetaCATs	BV-BRC	90	87
Metagenome Binning	BV-BRC	459	398
Metagenomic Read Mapping	BV-BRC	316	304
Primer Design	BV-BRC	135	135
RNASEq Analysis	BV-BRC	1,718	1,625

Sequence Submission	BV-BRC	8	8
Subspecies Classification	BV-BRC	210	203
Taxonomic Classification	BV-BRC	1,053	1,033
TnSeq Analysis	BV-BRC	47	41
Variation Analysis	BV-BRC	344	328
SARS-2 Genome Assembly and Annotation	BV-BRC	1,341	1,324

Notes:

1. The IRD and ViPR resources have now been decommissioned and are no longer available. They have been removed from this table. All service usage reported is from BV-BRC.

Publications and Citations

Publications and citations provide insights into how the BRC is moving science and technology forward and how the resources are serving their respective research communities. Lists of BRC-generated publications (including publications supported by the BRC program in collaboration with various partners) are updated when new manuscripts are accepted and published. Citations to BRC resources are measured using Google Scholar and augmented using PubMed and custom queries as needed to identify citations to the resource that do not cite the official reference publication(s).

● Citations to BRC publications

- *Definition* - Citations to the BRC as measured by citations to key BRC publications, which describe the overall BRC resources, new data and/or analysis tools, or novel use cases supported by them.
- *Measurement mechanism* - Set up a common Google Scholar profile covering key BRC resource publications (grouped by BRC) and show aggregated citations for each group. The use of Google Scholar profile makes it easier to view the list of publications used to track citations, update the list with new publications, and provide citation counts for individual publications as well as aggregated counts for each resource. Below is the link to the common BRC Google Scholar Profile.
 - <https://scholar.google.com/citations?user=kXLGwkYAAAAJ>
- *Measure* - Cumulative number of citations.

● Citations to BRC resources

- *Definition* - Citations to the BRC resource as measured Google Scholar searches using predetermined set of keywords based on name and/or acronym of each of the BRC resources, and additional keywords to filter out any false positive or negative results to the extent possible. This is complementary to the citations to the BRC publications described above and necessary because, often, users cite BRC resources by mentioning the resource name or URL in the manuscript text, instead of citing relevant publications.
- *Measurement mechanism* - Define set of keywords based on name and/or acronym of each of the BRC resources and additional keywords to filter out any false positive or negative results to the extent possible. Using these keywords as search terms, create Google Scholar URLs for each of the BRC resources, which will be checked every month to report a cumulative number of citations for each resource. Because of the limitations of the logical and advanced query operations supported by Google Scholar search interface, we are dividing BV-BRC query into three distinct sub queries as shown below.
 - VEuPathDB (merged DB, including legacy VectorBase, FungiDB & parasite resources): <https://scholar.google.com/scholar?q=OrthoMCL+OR+PlasmoDB+OR+ToxoDB+OR+CryptoDB+OR+TrichDB+OR+GiardiaDB+OR+TriTrypDB+OR+AmoebaDB+OR+Microsporidi>

[aDB+OR+%22FungiDB%22+OR+PiroplasmaDB+OR+%22vectorbase%22+OR+veupathdb+OR+ApiDB+OR+EuPathDB+-encrypt+-cryptography+-hymenoptera](#)

- BV-BRC:
 - PATRIC BRC:
 - https://scholar.google.com/scholar?hl=en&as_sdt=0%2C39&q=%28PATRIC+AND+Wattam%29+OR+%E2%80%9Cpatricbrc%22+OR+%22pathosystems+resource+integration+center%22
 - RAST/RASTtk:
 - https://scholar.google.com/scholar?hl=en&as_sdt=0%2C39&q=%28RAST+AND+overbeek%29+OR+%22rast.nmpdr.org%22
 - IRD/ViPR:
 - https://scholar.google.com/scholar?hl=en&as_sdt=0%2C39&q=%22viprbrc%22+OR+%22virus+pathogen+resource%22+OR+%E2%80%9Cfludb%22+OR+%22influenza+research+database%22
- *Measure* - Cumulative number of citations, cumulative.

Table 5. Citations to BRC Publications and Resources

	Number of Citations (YTD)	Number of Citations (Cumulative)
Citations to BV-BRC publications	681	18,103
Citations to BV-BRC resources	798	19,800

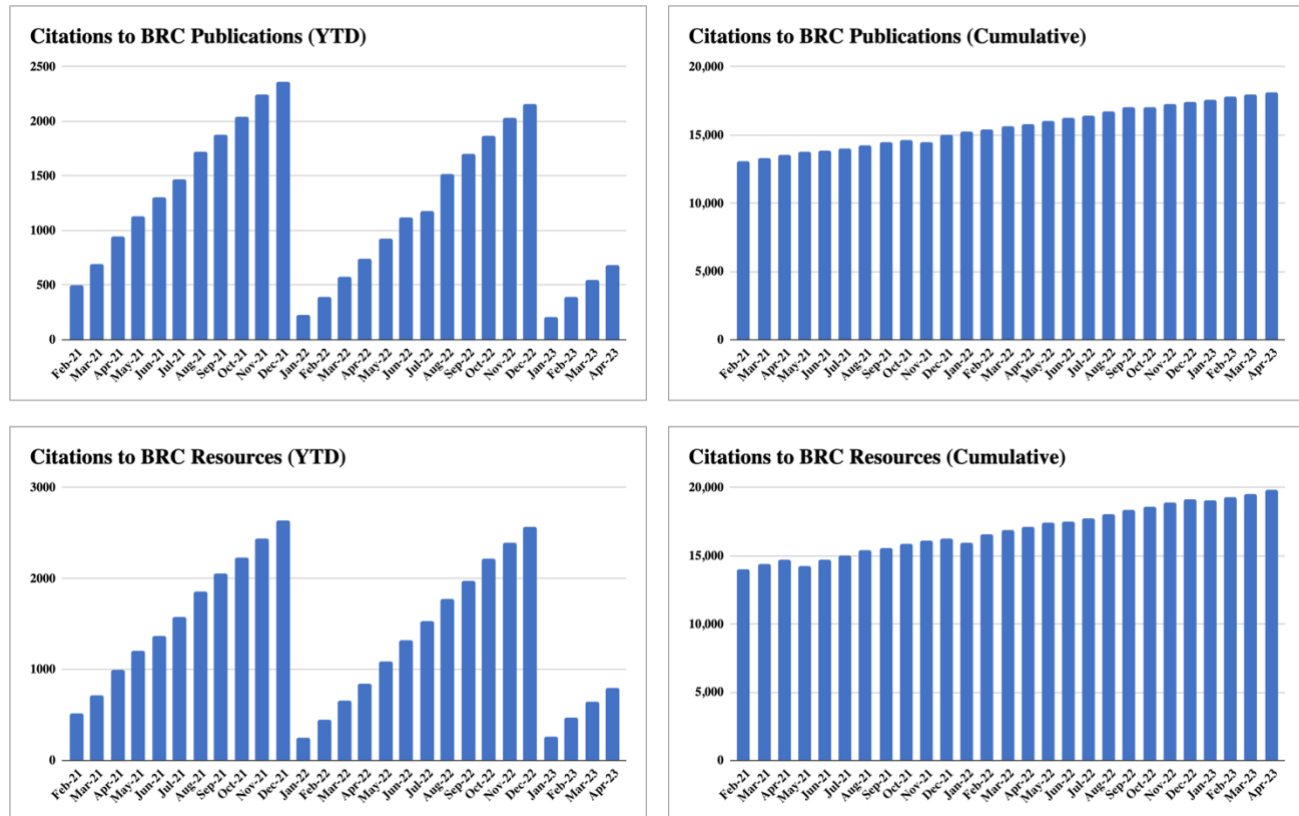


Figure 2. Citations to BV-BRC resources and publications.

User Activities

Outreach activities provide additional channels to engage users. User requests for help typically come in through the help desk functionality available from both BRC websites and are tracked using ticketing software tools. Webinar and workshop participants are counted at the time of registration and participation at the event. Counts of access to recorded webinars may be used to augment the total. Followers on social media (Twitter, Facebook, YouTube) are counted using the built-in mechanisms those platforms provide.

- **Total registered users**
 - *Definition* - Total cumulative number of users who have registered with the BRC via the website registration mechanism, from inception to the specified date.
 - *Measurement mechanism* - The registration process creates an entry in the registered user database for each BRC. Total number of registered users is queried from the database at the specified date.
 - *Measure* - Total number of registered users (cumulative).
- **Total storage used for user data**
 - *Definition* - Total amount of disk storage in use to host user data at the specified date. This metric provides an additional indication of resource usage that may not be reflected by website traffic or analysis jobs.
 - *Measurement mechanism* - Inspection of disk usage via query or automated script.
 - *Measure* - Total terabytes (TB) currently in use.
- **User requests for help**
 - *Definition* - Total number of user-initiated contacts to the BRC to request help or information during the specified date range. In addition to summarizing total user requests, we will also summarize them by the following categories: Requests for help, Bug reports, and New features / enhancements.
 - *Measurement mechanism* - Manual tally of the auto-generated helpdesk tickets triggered by user requests. Tallies may be augmented with manual counts of interactions where the user bypassed the helpdesk system, e.g. via direct email or messaging to BRC team members.
 - *Measure* - Requests per month.
- **Webinar/workshop events and participants**
 - *Definition* - Total number of outreach events (i.e. BRC webinars, workshops, and online courses) held per month and total number of participants who attended those events.
 - *Measurement mechanism* - Manual tally of participants in attendance at the time of the webinar or workshop, summed over all of the events held per month.
 - *Measure* - Cumulative number of participants per month
- **Followers on social media**
 - *Definition* - Total number of followers, by social media outlet, at the specified date. Current active BRC social media outlets are Twitter, Facebook, and YouTube.
 - *Measurement mechanism* - Inspection of the number of followers reported by the media outlet at the specified date.
 - *Measure* - Total number of followers, by media outlet.

	PATRIC	IRD/viPR	BV-BRC	Total
Total registered users	NA ₁	NA ₁	43,682	43,682
Total storage used for user data (TB)	NA ₁	NA ₁	341	341

User requests:	NA ₁	NA ₁	107	107
<ul style="list-style-type: none"> Request for help Report bug Suggest improvement 			107 (100%) 0 (0%) 0 (0%)	107 (100%) 0 (0%) 0 (0%)
Webinar/workshop events	NA ₁	NA ₁	0	1
Total webinar/workshop participants	NA ₁	NA ₁	0	26
Total MOOC registrants (cumulative)	10,734	NA ₁	10,734	10,734
Twitter followers	647	443	293	1,383
Facebook followers	259	2,155	1.1K	3,514
YouTube subscribers	439	197	314	950
YouTube views	341	59	1,052	1,452
BRC Subreddit members	NA	NA	NA	99
BRC Subreddit views	NA	NA	NA	45

Notes:

- The PATRIC, IRD, and ViPR resources have now been decommissioned and are no longer available. They will be removed from the next month's report. Statistics from the PATRIC, IRD, and ViPR social media channels (Twitter, Facebook, and YouTube) will be maintained until a sufficient number of users have migrated to the corresponding BV-BRC channels.

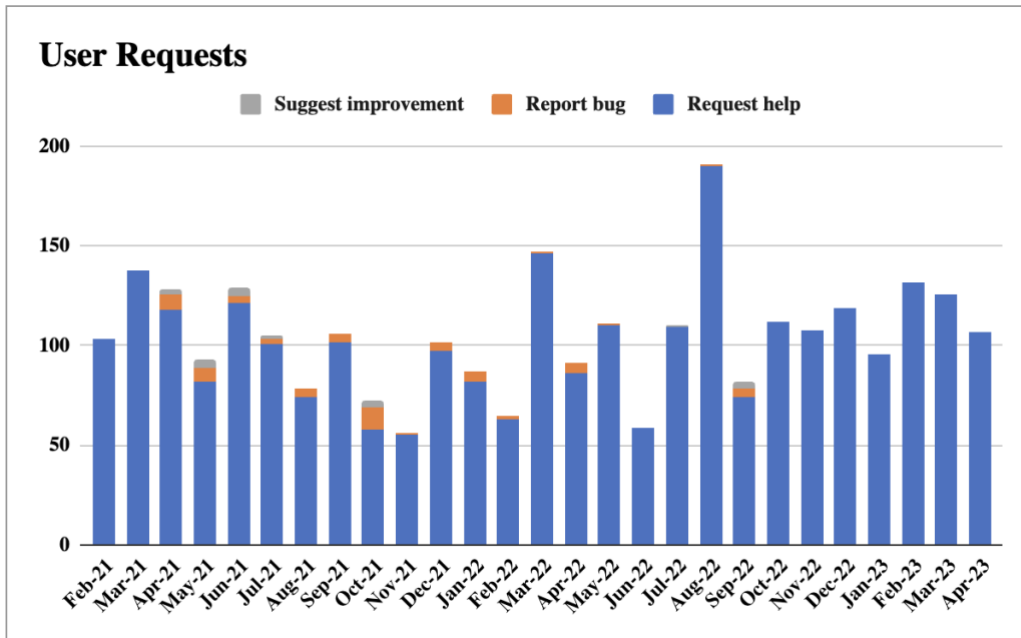


Figure 3. Requests by users, sorted by type.